



The P'titioner



GWRRA Texas Chapter 'P'

We meet the 2nd Thursday of each month @ **Spring Creek BBQ**

In Granbury



August 2011

From your Director

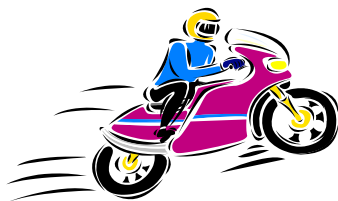
Many of us went to Wing Ding and everyone arrived safely in Knoxville although the Frady's did have a little mishap. Becky and I met Don and the Whan's at 5:00 am at IHOP on Bryant Irvin on Tues, 7/5/11 and arrived in Memphis around 3:00, where Becky & I stayed that night to visit my son, while the others went on. We finished the trip Wed and met Ed and Marsha Frady at the B&B that afternoon. We met the whole gang, Paul, Barbara, Ray, Connie, Bob, Bobbie, Ed, Marsha, and Don Wed night for dinner and had a great time! There were lots of classes and shoppertunities at the Wing Ding and we also enjoyed the light parade and the drill team show. Then Becky & I started back Saturday around 4:00 am and travelled almost 700 miles that day to arrive in Fort Smith, AR around 3:00 pm. The last 100 miles was HOT, but we were able to visit my daughter that night and get up early the next morning to finish the trip. We arrived home around 1:00, before it got REAL hot! We had a great time and have some ideas for more overnight trips when it's cooler.

There were a couple of other rides this month, Don and I went on a ride to Possum Kingdom on 6/25 and on 7/16, Bob, Bobbie, Jeff and I went on a breakfast ride and stopped at Honda Kawasaki West, who has recently become one of our sponsors, to visit with them. If there is someplace you'd like to see on the ride calendar, please feel free to let us know, or better yet, plan a ride!

Look forward to seeing you at the next Chapter P Gathering, August 11th!

If you want to volunteer for jobs in the Chapter, let me know – We Need You!

Don't forget the Sonic Social is Thursday, August 25th!



Gary and Becky Wheatley

Let's Keep Those Wheels Rolling!!!

**PLANTATION INN
on Lake Granbury**

**American owned
and operated
Dutch and Brenda
Wilkinson**



King Singles & Queen Doubles

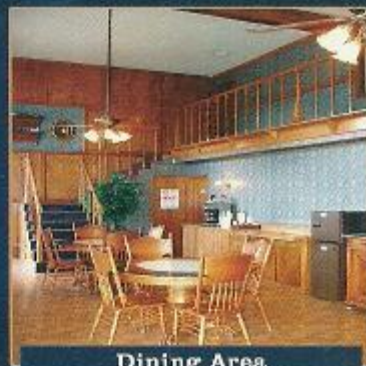


**Courtyard with children's
wading pool**



Suite Living Area

**Reservations
1-800-422-2402**



Dining Area

3 Bedroom Lakehouse



Lakehouse Living/Dining

Come Visit us in Granbury Texas

Just minutes from the historical square

Enjoy fine dining and shopping within walking distance.

planinn@hcnews.com

www.plantationinngranbury.com

PLANTATION INN

ON LAKE GRANBURY

817-573-8846

Reservations 1-800-422-2402

**1451
E PEARL ST**

 **Texas Hotel &
Motel Association**

American Owned & Operated
<http://www.hcnews.com/~planinn>



King Singles • Queen Doubles & Suites
DSL & High Speed Internet • Lobby Computer Available
Free Continental Breakfast • Refrigerators & Microwaves
25" Remote Control TV's / Satellite • Meeting & Conference Rooms
Swimming Pool • Non-Smoking Rooms

Quite & serene surroundings on 2.4 acres with ample parking for buses, vans, trucks, motorcycles and boat trailers. With 53 immaculate rooms, we offer just what you need to accommodate your stay in Granbury.

Outdoor Pool with Children's wading area

Free High Speed Internet

Free Wireless DSL

Free Hot Breakfast including sausage, biscuits & gravy and waffles

Check availability & make reservations by calling 1-800-422-2402

These photos of unique sidecars were submitted by Trubon Wheeler.

Wow! Imagine the looks you would get riding some of these!

Thanks Trubon!





SONIC SOCIALS ARE COOL

Come join us for the fun and fellowship at our next get together August 25th in Cresson. Make new friends, plan rides, eat, laugh at those with brain freeze! and enjoy the fun!



RANGLERS

Convenience Store
Hwy 6 & Hwy 281
Hico, Texas
254 796-4838



All roads lead to Hico!



and say hello!



D.F.T.
INDEPENDENT SUSPENSION
TRIKE CONVERSIONS



CHARLIE & LINDA SHELDON

2002 C ROOSEVELT DRIVE
PANTEGO, TX 76013

800 657-1664
817 975-0661

CMSHELDON@TX.RR.COM
WWW.SOUTHWESTTOURING.COM



UPCOMING EVENT

My name is also Gary and I'm one of the local volunteers for the DFW/North Texas Ride for Kids. In case you're not familiar with the Ride for Kids, it is a charity ride to help children with brain tumors, the most deadly cancer for children in America. As volunteers, we try to reach out to all the riding groups in the area, especially GWRRA and HRCA groups since Honda is the presenting sponsor and has been helping Ride for Kids and the Pediatric Brain Tumor Foundation for years. We would love to see Chapter P join the rest of the North Texas crowd on October 2 and I can tell you that because of the kids you will meet at the lunch that follows the ride, you'll be glad you came. And, you'll see a lot of other GW riders from the area.

It would also be great if you could get the ride on your chapter calendar for Sunday, Oct. 2 so folks can plan to be there. Here's a couple of links you can choose from to give folks the info.

I know we used to have a number of GW riders from the Granbury area at the Ride for Kids when it was started in Benbrook on the SW side of Ft Worth. We now begin and end at Grapevine Mills Mall, which allows ladies to shop at the mall afterwards and the guys to hit Bass Pro Shop right across the street right after the ride lunch. It's been a big hit and we also get a lot of riders who come in Saturday night before the ride and stay at the host hotel at the mall to enjoy the area and just get up the next morning where the ride registration starts. Hope to see a bunch of your riders join us.

Gary Touchstone

Help us find the cause and cure of childhood brain tumors and save a child's life!

<http://www.youtube.com/watch?v=4jtsRQvP6c>

www.pbtfus.org/rideforkids/events/2011/dallas-fortworth.html

DFW Area *Ride for Kids*®

A promotional poster for the 'Ride for Kids' event in Dallas/Fort Worth, 2011. The poster features a central image of a smiling young girl wearing a red motorcycle helmet. Behind her is a stylized city skyline with several skyscrapers. The text 'DALLAS/FORT WORTH' is at the top in large, bold, black letters, and '2011' is in large, green, outlined numbers to the right. The 'Ride for Kids' logo is written in a large, red, cursive font across the middle. Below the logo, it says 'Benefiting the Pediatric Brain Tumor Foundation®'. At the bottom, the date 'SUN. OCT. 2' is prominently displayed, followed by the location 'Starting at Grapevine Mills Mall Southeast Parking Area, 3000 Grapevine Mills Pkwy., Grapevine' and the registration time 'Registration 8 a.m. - 9:45 a.m.'. A small paragraph of text explains the purpose of the ride: 'Every year, thousands of kids are diagnosed with a brain tumor - the deadliest type of childhood cancer. You can give them a brighter future by joining other motorcyclists at the Pediatric Brain Tumor Foundation® Ride for Kids® program to raise funds for medical research and family support. We ride in 40 cities across the country.' At the very bottom, it provides contact information: 'Get a free information kit at your local motorcycle dealer today, call us at 800-253-6530 or go to rideforkids.org to learn more. Thank you from the kids!'.

DALLAS/FORT WORTH

2011

Ride for Kids

Benefiting the
Pediatric Brain Tumor Foundation®

SUN. OCT. 2

Starting at Grapevine Mills Mall

Southeast Parking Area,

3000 Grapevine Mills Pkwy., Grapevine

Registration 8 a.m. - 9:45 a.m.

Rain or shine. Riders on all makes and models are welcome.

Every year, thousands of kids are diagnosed with a brain tumor - the deadliest type of childhood cancer. You can give them a brighter future by joining other motorcyclists at the Pediatric Brain Tumor Foundation® Ride for Kids® program to raise funds for medical research and family support. We ride in 40 cities across the country.

Get a free information kit at your local motorcycle dealer today, call us at 800-253-6530 or go to rideforkids.org to learn more. Thank you from the kids!

Chapter Shirts Available

Now available and taking orders!

Sport your chapter pride in a new polo style shirt.

This lightweight wicking fabric offers a great look and a comfortable fit.

Place your order with Connie Whan.



HOME-STYLE COOKING



254-796-0952

TAKE-OUT MENU



Hours:

Sat-Tues: 7am-2pm

Wed & Thurs: 7am- 8:30pm

Friday: 7am- 9pm

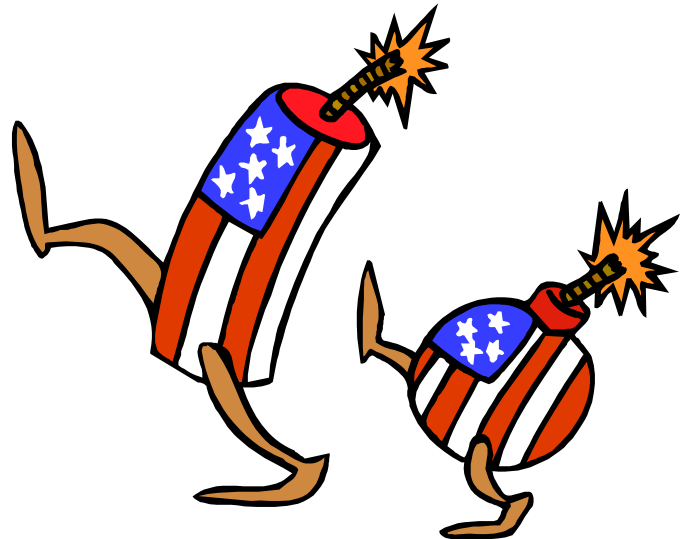
201 S. Walnut / South HWY 281

Hico, Texas

We need rides!

Do you have a favorite diner, coffee shop, or destination you would like to share?

Let us know! We will put it on the calendar!



RARE **Motorsports**

ALL THINGS STREET
ALL THINGS DIRT

RON RIEKE

414 W. Morgan
Meridian, TX 76665
www.rare.com

254-435-9898
Fax 254-435-6216
ron@rare.com

Thank you for supporting our sponsors, as they continue to support GWRRA TX- P

Thank You! To you, the members who continue to make contributions of gifts to give away at the monthly gatherings each month. You know who you are and we appreciate you!

Chapter P has given away some great prizes this year and we hope we can continue to do so.

If you have not attended a monthly gathering lately, please mark your calendars and come pay us a visit!

We do our best to start on time (7:00pm) and try to keep the meeting to less than an hour. Now getting out of the parking lot is on your own watch as we like to hang around and visit and get caught up on your business.

If you would like to lead or post a ride, please feel free to let us know. It's a great way to get involved and contribute to your chapter! We can't do it alone!

I encourage you to keep an eye on the other chapter calendars as well. They offer opportunities for great rides & fun. What a great way to make new friends!

GWRRA....FRIENDS for FUN,
Safety & Knowledge

SPRING CREEK
BARBEQUE

The Great Taste of Texas


Wear your vest or chapter colors to the monthly gathering and receive your non alcoholic beverages **free!**
Compliments of the good folks at **SPRING CREEK BARBEQUE.**

PIG IRON CITY
MOTORCYCLE
APPAREL
& *Accessories*

817-573-8550 4061 EAST HWY 377
GRANBURY, TX

Show your GWRRA card save 10%

We hope to **see you** at an upcoming event!

Monthly Chapter P Gathering—Aug 11th

Chapter M's Moonlight Fun Run-August 13th

Chapter I's Dog Days of Summer-August 20

Chapter M2 & X2 Rally & BBQ-August 20

Kansas District Convention-August 26-27

find more on these and other events on the Texas District website at www.gwrra-tx.org



TEXAS DISTRICT STAFF

Fred & Mandy Mew
District Directors
Newsletter Editor

Lynn Heene
District Trainer
TxTrainer@gwrra-tx.org

Mark Heene
District Webmaster
webmaster@gwrra-tx.org

Chet Roby & Maria Collins
District Educators
TXED@gwrra-tx.org

Texas District Website
www.gwrra-tx.org



Fred and Mandy Mew

Mark & Lynn Heene
Assistant District Directors
TexasADD@gwrra-tx.org

Carolyn Barton
Membership Enhancement
Division
txmedac@gwrra-tx.org

Donna Holley
Asst. Membership Enhance-
ment Division
asstmec@gwrra-tx.org



Leona McDade
Treasurer & Patch Diva
treasurer@gwrra-tx.org

Don & Linda Holley
Vendor Coordinators
TxVC@gwrra-tx.org

Terry McDade
Admin. Support & Security

**Dave & Jean Simmons Dis-
trict Couple Of The Year**
TxCOY@gwrra-tx.org

H Website www.gwrra-h.org

Honda **West** **Cleburne**

1731 N. Main St. (Hwy 174)

Cleburne, Texas 76033

Toll Free @ 1-877-645-6444

Tue - Fri 9 am - 6 pm

Sat 9 am - 4 pm

Sales, Service & Parts

Johnson County's only authorized Honda Motorcycle & ATV Dealer.



 **HONDA**

PERFORMANCE FIRST™

1731 N. Main (Hwy 174) — Cleburne, TX 76033